

# Features

- Aerodynamic Fiberglass Front Cap
- Stainless Steel Appliances
- Vaulted Ceiling System
- Exterior LED Lights
- Frameless Tinted Windows
- Power Tongue Jack
- Air Bed Sofa Sleeper
- Power Tongue Jack
- Max. Depth Slides
- Progressive Interior Lighting
- Chesnut Glazed Cabinetry
- Enhanced Exterior Graphics Package



# Fabric Options



Blackberry



Godiva



Sagebrush

# TRAYLEN

ENTERPRISES

[www.traylen.com](http://www.traylen.com)

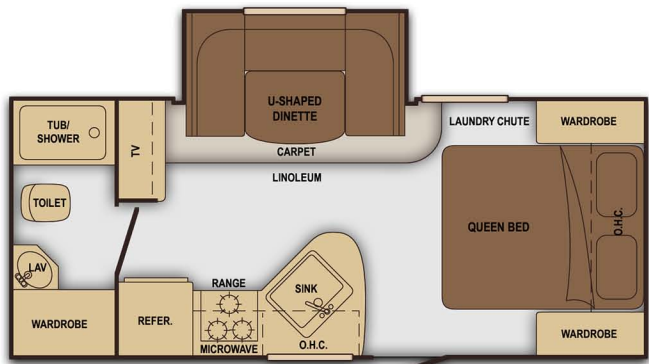
Tel: 01932 828 888 Fax: 01932 844 738 E-Mail: [info@traylen.com](mailto:info@traylen.com)  
Woburn Park Farm, Addlestone Moor, Addlestone, Surrey, KT15 2QF

# PREMIER

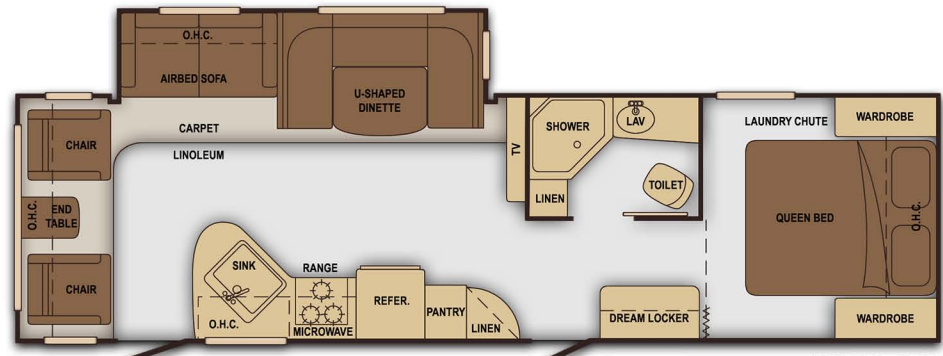
ULTRA LITE



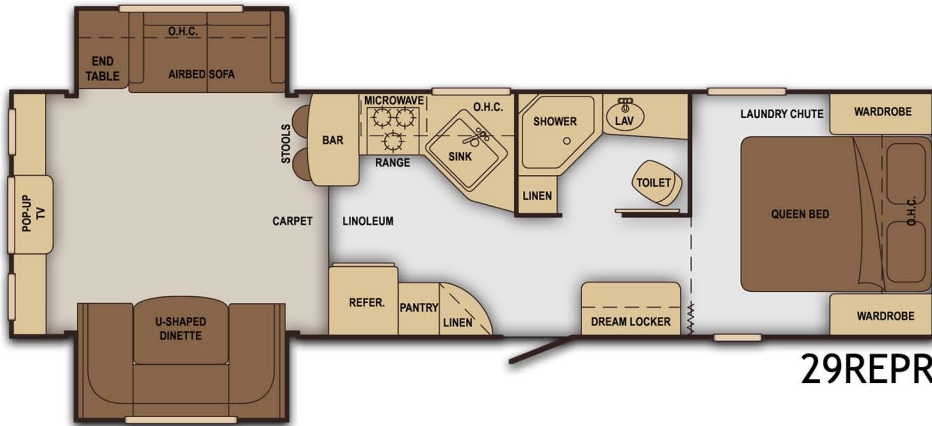
Luxury Lightweight Travel Trailers



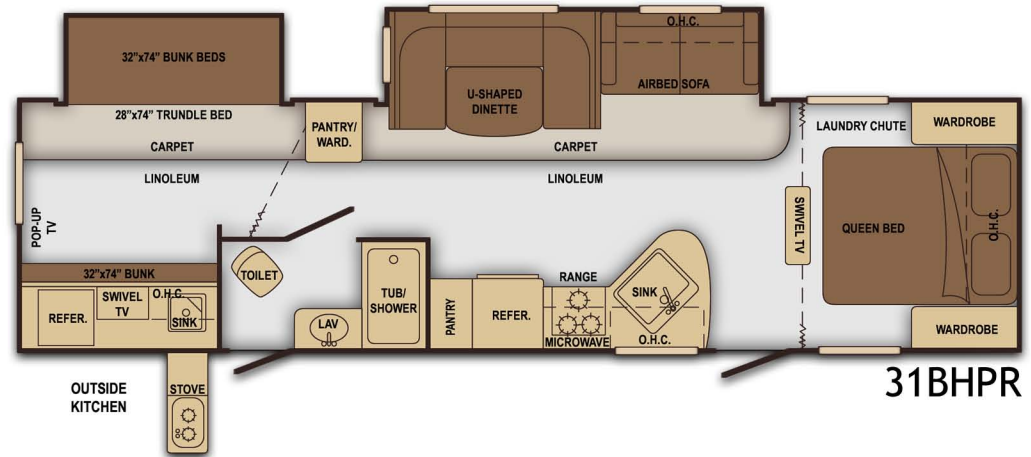
19FBPR



28RLPR



29REPR



31BHPR

Model	19FBPR	28RLPR	29REPR	31BHPR
Shipping Weight	TBD	5900 lb	TBD	6355 lb
Carrying Capacity	TBD	1700 lb	TBD	1245 lb
Hitch	TBD	670 lb	TBD	780 lb
Length (inc. Hitch)	TBD	33' 6"	33' 6"	35' 4"
Height	TBD	10' 11"	10' 11"	10' 11"
Fresh Water	TBD	41 gal.	41 gal.	41 gal.
Waste Water	TBD	30 gal.	30 gal.	30 gal.
Grey Water	TBD	60 gal.	30 gal.	30 gal.
LPG	TBD	40 gal.	40 gal.	40 gal.
Tyre Size	TBD	205/75R14C	205/75R14C	205/75R14C